



OUR CHEMICAL INJECTION UNIT WILL **\$AVE** YOUR COMPANY **\$** !



At Mountain Supply and Service we know that managing your cost is crucial. We are proud to offer a Chemical Injection Unit for use in coiled tubing or workover rig assisted snubbing applications for frac plug drillouts. Combined with our quality Completion Fluids, proper polymer hydration is ensured to provide a significantly enhanced drillout for the customer.

HERE IS HOW WE DO IT....

THE TECHNOLOGY

The principle behind the injection unit is to provide precise dosage of chemical by adjusting the injection rates as flow rates change. This will ensure consistent chemical dispersion and provide the most optimum and efficient wellbore cleaning system for frac plug drillouts and overall coiled tubing and workover operations.

THE BENEFITS:

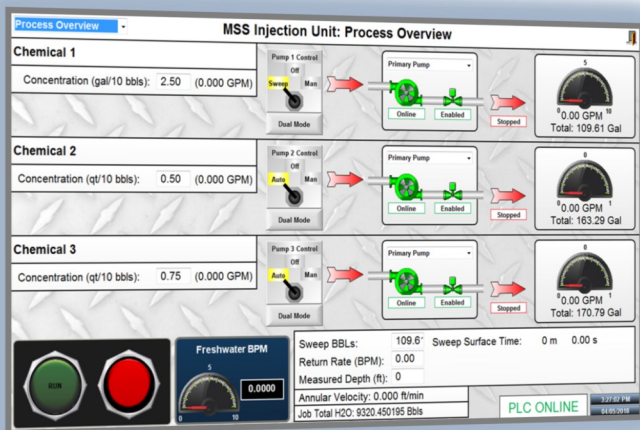
- Accurate chemical dosing
- Precise metering of chemicals
- Consistent, even dosing as flow rates vary
- Reduced intervention risk
- Less HS&E concerns
- Less environmental concerns with potential spills currently experienced with conventional methods
- Economic mobilization
- Small footprint on location





HOW IT WORKS

- Skid mounted for mobility; easily fits on a flat bed or utility trailer
- Six chemical pumps for direct, inline injection
- Digital flow meter and adjusts the chemical pump rates to ensure consistent dosing as flow rates vary
- Dosages dictated both technically and/or manually by the frequency value
- Secondary dosage controlled manually through pumps by external VFD's displays
- Data logger monitors system parameters and amount of chemicals pumped on a daily basis
- Inline Static Mixer to ensure optimum polymer hydration and consistent fluid dispersion
- Separate Dye Pump for sweeps
- Injection Quills that prevent any back-fill scenarios



OPERATIONS

Proprietary Software

Magmeter chemical delivery system

Auto chemical dosage

Software recalculates and displays Annular Velocity after every sweep

Data Analytics to observe trends and improve overall drillout efficiency

Using Mountain Supply and Service Completion Fluids in conjunction with the Injection Unit maximizes the effectiveness and efficiency of plug drill outs. The data software will produce accurate information as to the type, quantity and frequency of fluid application, thus providing the most optimum and efficient wellbore cleaning system. The combination of Mountain Supply and Service's superior quality Completion Fluids and our Injection Unit provide rapid response capability through real time controls of fluid chemistry.